

NOUVEAU™

A TRUSTED BRAND WITH A FRAMELESS APPEAL



Thomasville
C A B I N E T R Y®



Thomasville
C A B I N E T R Y .

NOUVEAU™



WELCOME TO A WORLD OF OPTIONS

THE WORLD OF THOMASVILLE CABINETRY®. Whether the space is a small urban loft in need of more storage space, or a large suburban kitchen designed to entertain, you need a trusted brand of cabinets that will deliver. Thomasville Nouveau™ cabinetry offers just that. Featuring frameless construction, Thomasville Nouveau gives you unobstructed access to more space than ever before. With styles and finishes that are edgy and on trend with today's latest designs to more transitional styling for comfortable easy living, Thomasville has a solution to meet your needs, respect your budget and exceed your expectations.

LIVING IN THOMASVILLE HAS NEVER BEEN EASIER.







LAKEFIELD MAPLE GYPSUM & PEBBLE

Available in cherry, maple, oak, rustic alder and rift oak.
Full overlay, recessed center panel door;
standard 5-piece drawer front.



JULES ACRYLIC INDIGO METALLIC AND TALLOW

Available in cherry, maple, oak,
rift oak, white oak, bamboo, MDF, and acrylic.
Full overlay, slab door; standard slab drawer front.





CARLISLE HORIZONTAL
MELAMINE WOODGRAIN TEXTURED TWEED



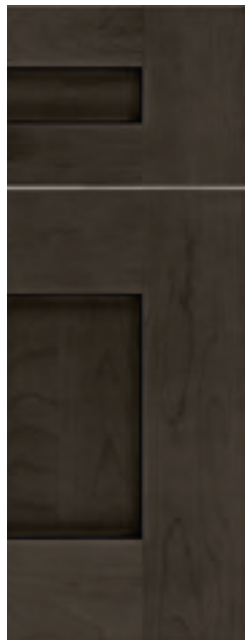
SCOTIA MAPLE WISTERIA

Available in cherry and maple.
Full overlay, mitered, recessed center panel door;
standard 5-piece drawer front.



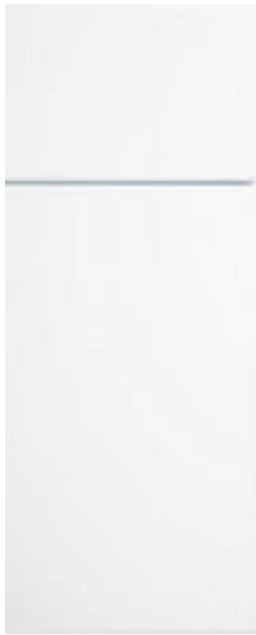






BRUNSWICK MAPLE GROTTO

Available in cherry, maple, rustic alder and rift oak.
Full overlay, wide rail, recessed center panel door,
standard 5-piece drawer front.



CROSSE HIGH GLOSS THERMOFOIL GLOSS LILLY

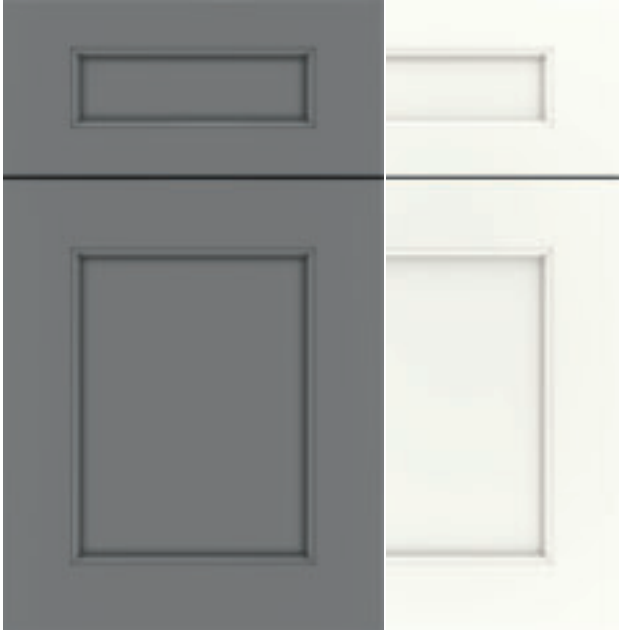
Available in high gloss thermofoil.

Full overlay, slab door, standard slab drawer front.









HOLLINGS MAPLE SNOWFLAKE & IRON GREY

Available in cherry, maple oak and rustic alder.

Full overlay, recessed center panel door;

5-piece recessed drawer front standard.



ORGANIZATION SOLUTIONS

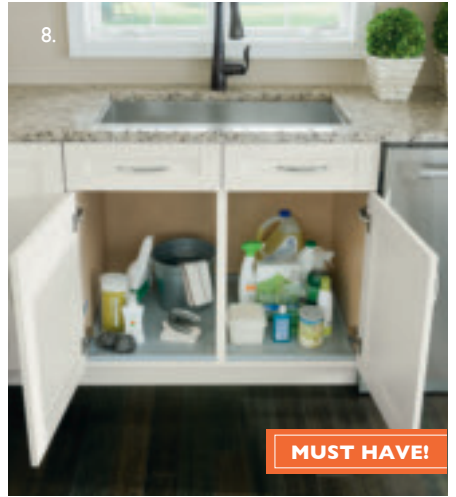


MUST HAVE!

Your new kitchen, and you, can't live without these products. Make sure you incorporate these "Must Haves!"



1. LEMANS CORNER UNIT
2. BASE POTS AND PANS PULL-OUT
3. METAL DRAWER STORAGE
4. VANITY SINK WITH U-SHAPED SLIDEOUT
5. DRAWER PLATE ORGANIZER
6. LAZY SUSAN
7. HEARTH PIER PULL-OUT AND CORBEL PLATE
8. CABINET MAT
9. TALL PANTRY UNIT
10. SLIDING SHELVES
11. TALL PANTRY PULL-OUT
12. RECYCLING CENTER
13. SINK BASE WITH ROUND WASTE BIN
14. BASE PANTRY PULL-OUT



STANDARD DOOR STYLES



Anniston MC



Anson MCAORD



Barlow MCAOR



Brunswick MCA R



Chandler D



Crosse H



Erwin MCAO



Finley MCAOR



Foster MCAO



Grimsby MCA



Hartselle MC



Hollings MCAO

WOODTYPE KEY:

M maple
C cherry

A rustic alder
H high gloss thermofoil

B bamboo
O oak

W white oak
R rift oak

Y acrylic
D mdf



Ingram MCAO



Ives MCO



Jules MCORYD



Jules Horizontal BW



Lakefield MCAOR



Lana MCAH



Ovelt H



Sandoval MCR



Scotia MC



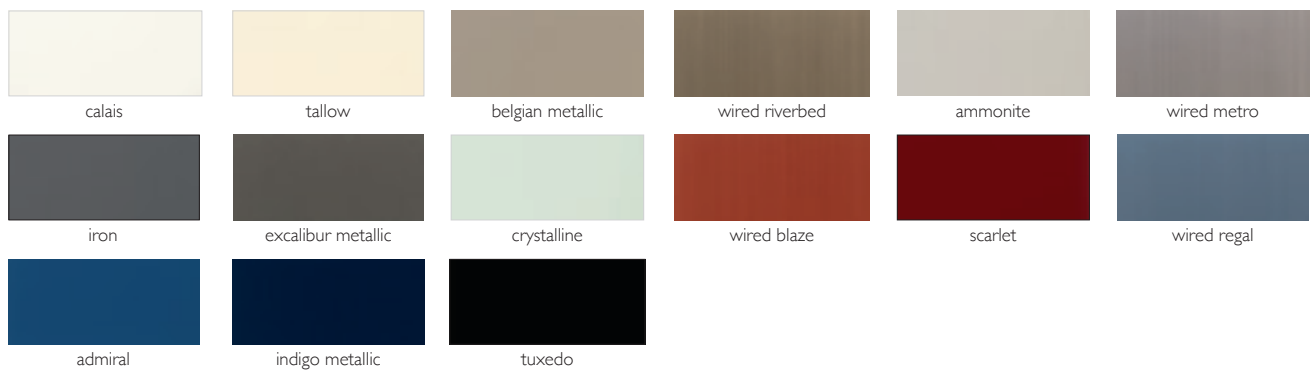
Tension MCAO



Westcott MCAO

STANDARD FINISHES

ACRYLICS (AVAILABLE ON JULES ONLY)



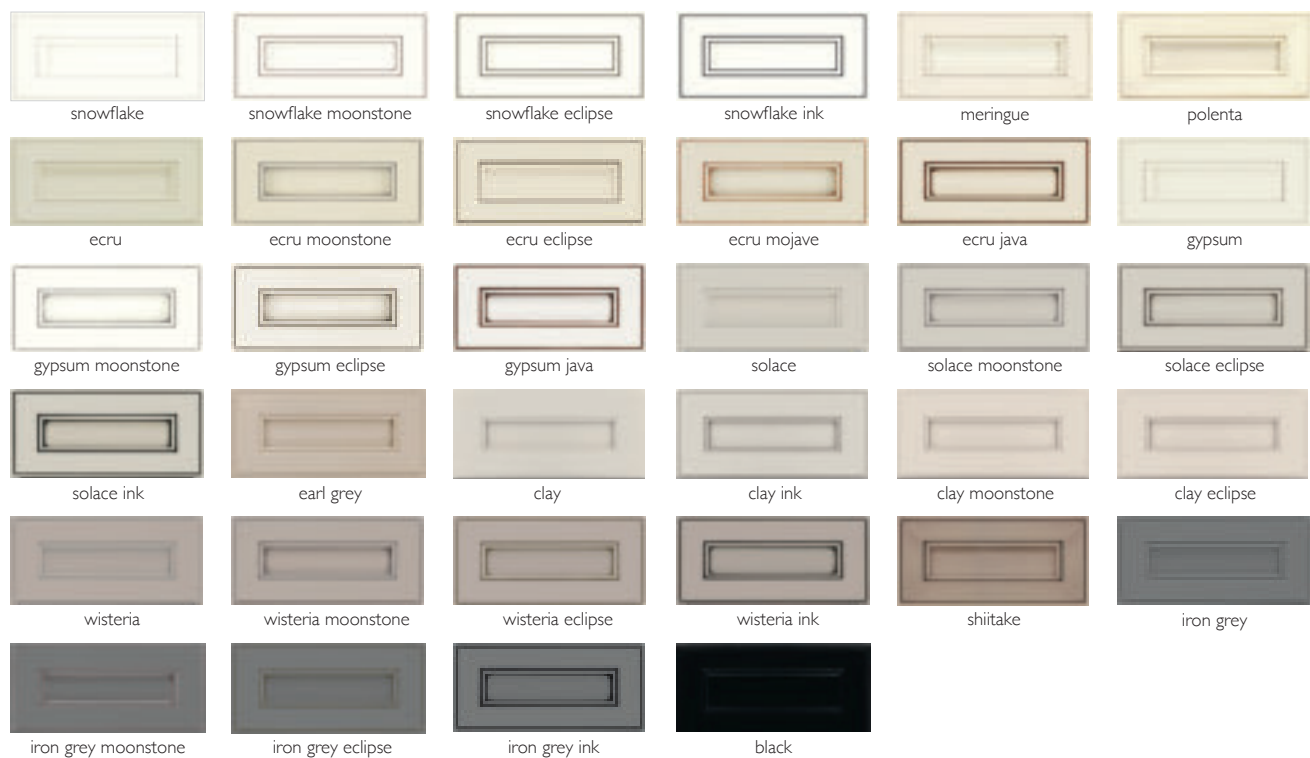
HIGH GLOSS THERMOFOIL (AVAILABLE ON *CROSSE AND **OVETT)



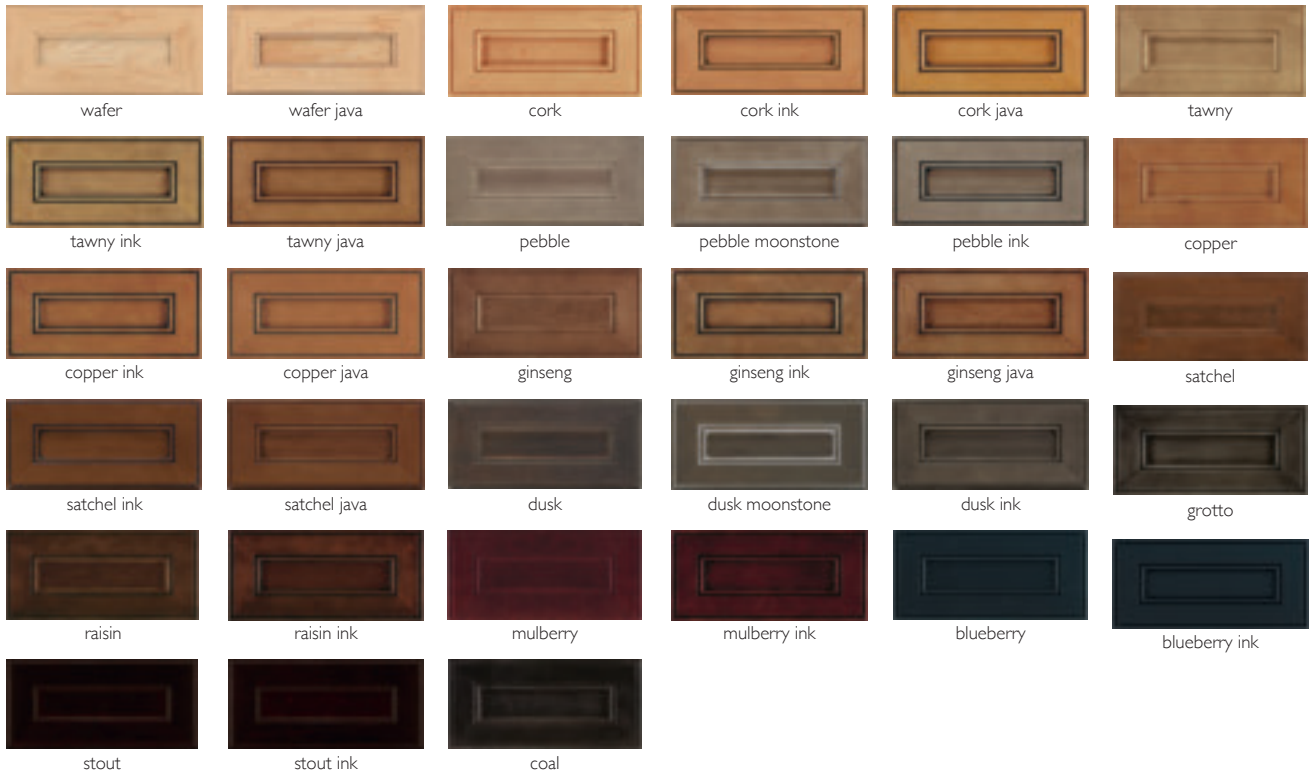
WHITE OAK & BAMBOO (AVAILABLE ON JULES HORIZONTAL ONLY)



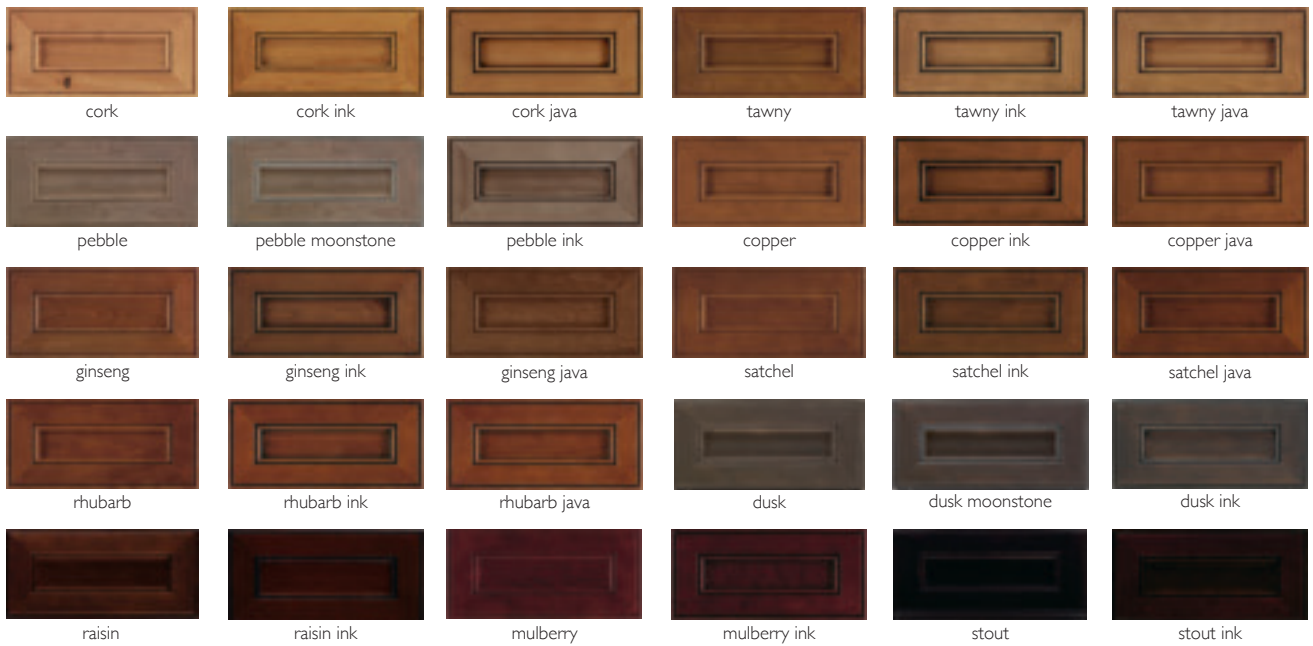
MAPLE & MDF



MAPLE

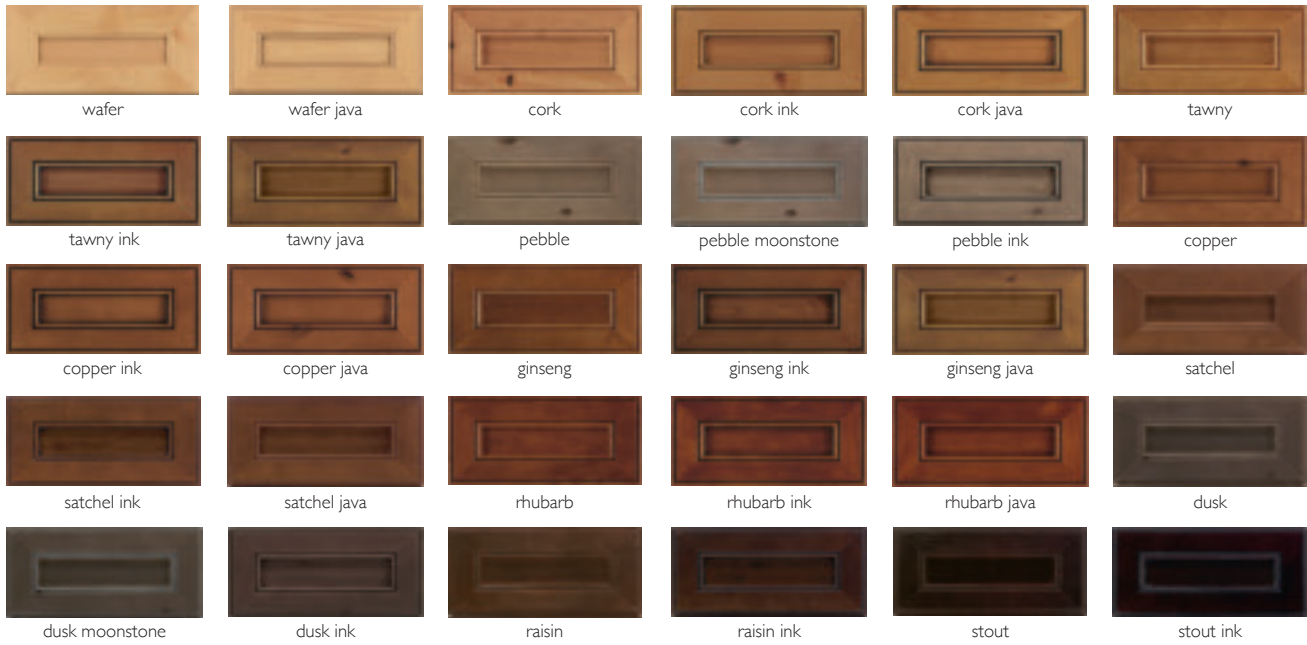


CHERRY



STANDARD FINISHES

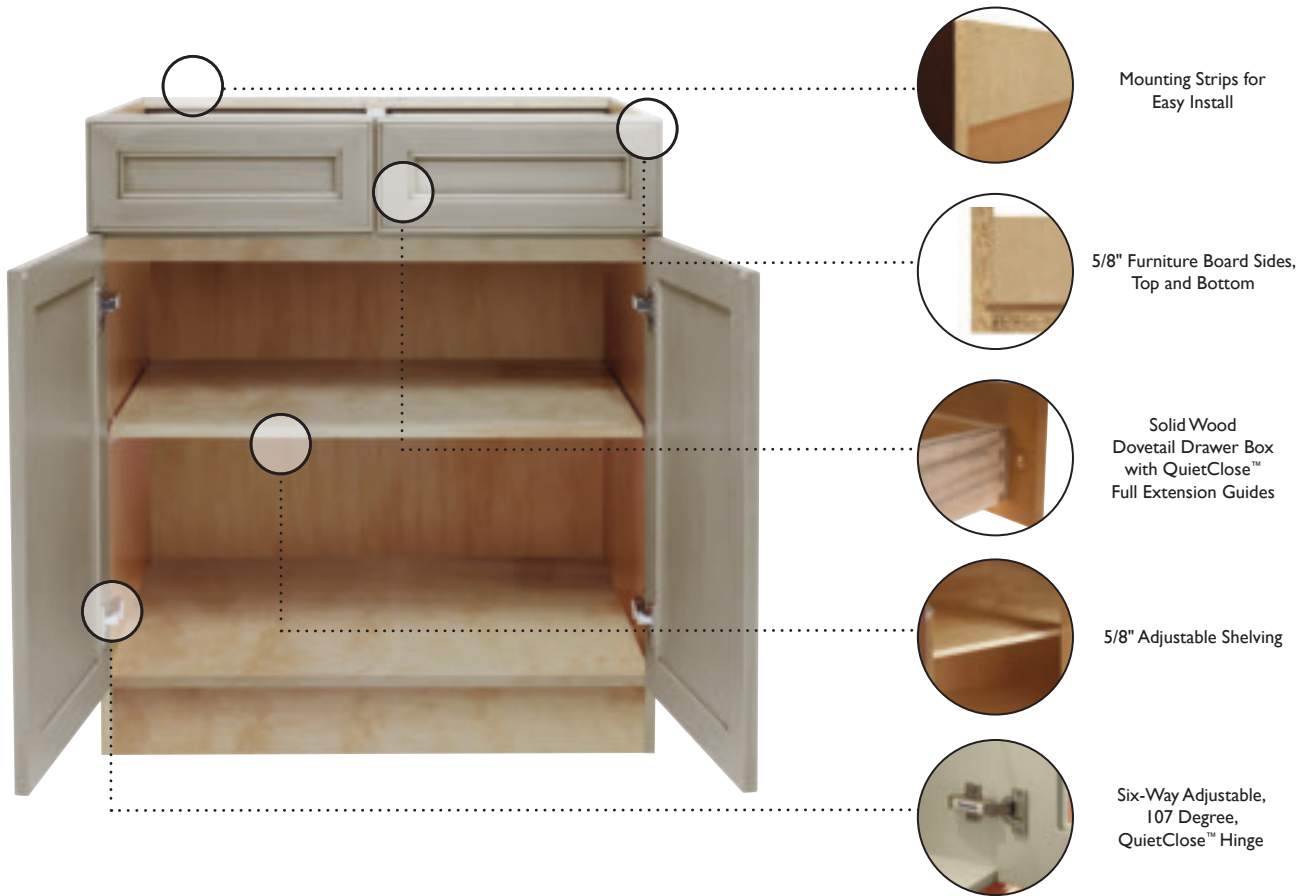
RUSTIC ALDER



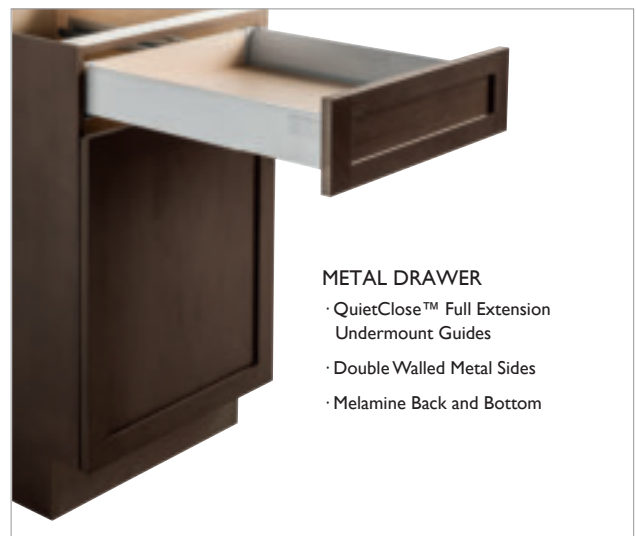
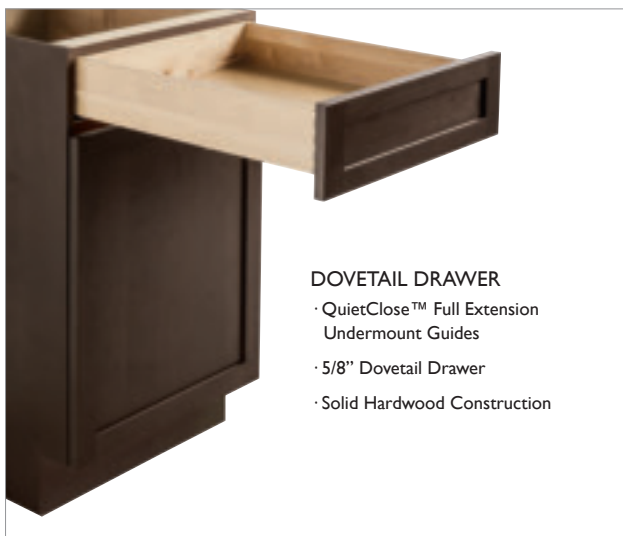
OAK & RIFT OAK (*RIFT OAK ONLY)



STANDARD CONSTRUCTION



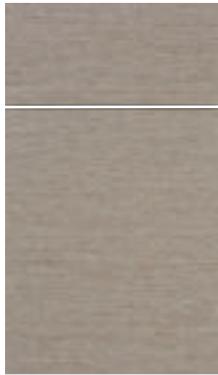
STANDARD DRAWER OPTIONS



VALUE DOOR STYLES AND FINISHES

WOODTYPE KEY:
T thermofoil
E melamine

MELAMINE



Carlisle Horizontal E



woodgrain textured
heather



woodgrain textured
ravenna

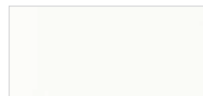


woodgrain textured
tweed

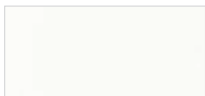
THERMOFOIL



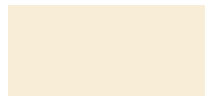
Nelson T



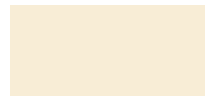
satin lilly



textured lilly



satin oleander



textured oleander



satin mortar



woodgrain dune



woodgrain lucent



woodgrain mink



woodgrain earth



woodgrain taffy



woodgrain fig



woodgrain sorghum



woodgrain torte



woodgrain textured
basalto

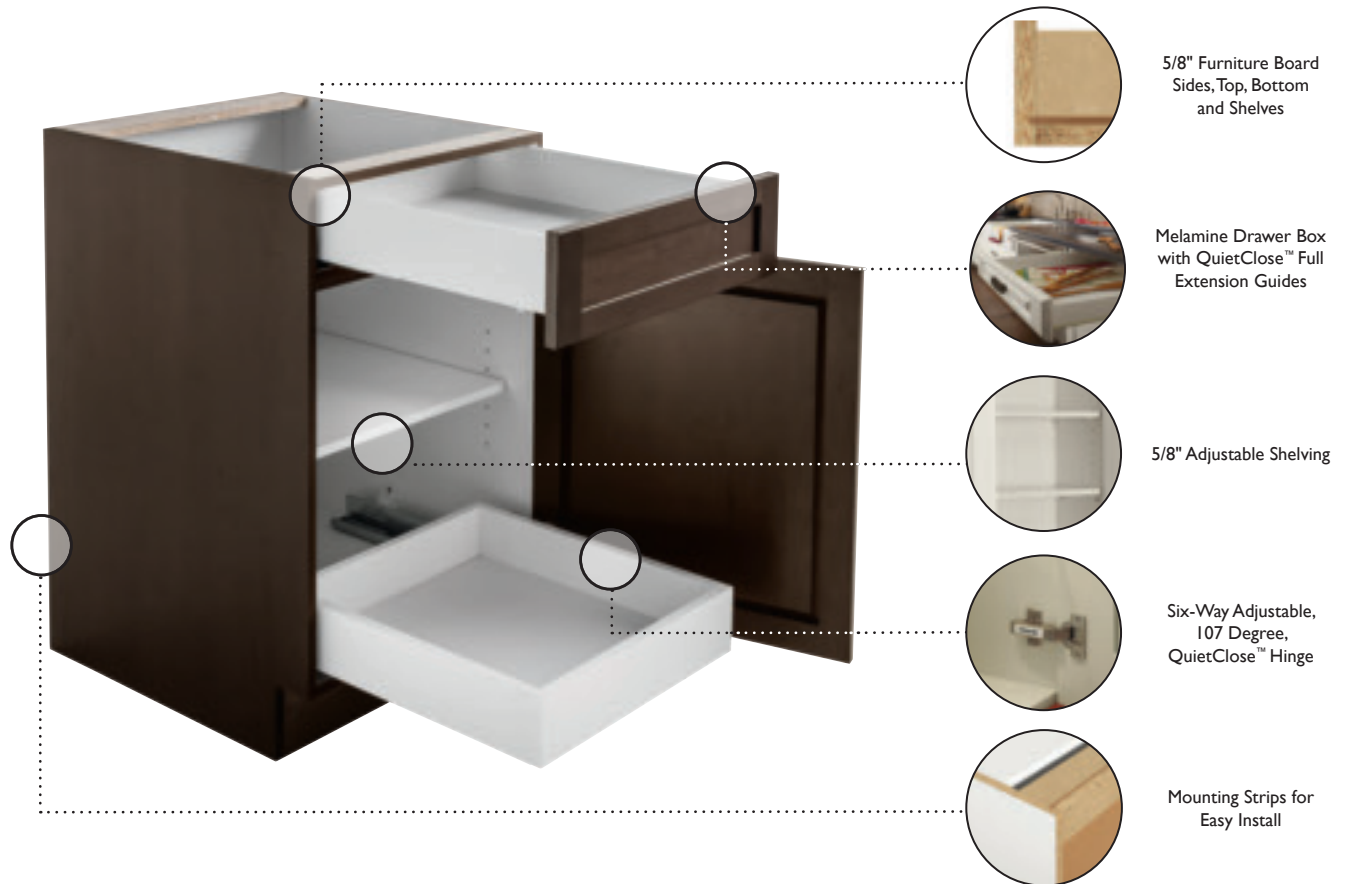


woodgrain raven

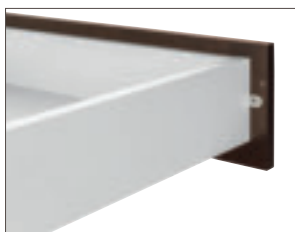


woodgrain french
chocolate

VALUE CONSTRUCTION



VALUE DRAWER OPTIONS



WHITE MELAMINE DRAWER

- QuietClose™ Full Extension Undermount Guides
- 5/8" White Melamine Drawer Box



NATURAL MELAMINE DRAWER

- QuietClose™ Full Extension Undermount Guides
- 5/8" Natural Maple Melamine Drawer Box

UPGRADES



DOVETAIL DRAWER

- QuietClose™ Full Extension Undermount Guides
- 5/8" Dovetail Drawer
- Solid Hardwood Construction

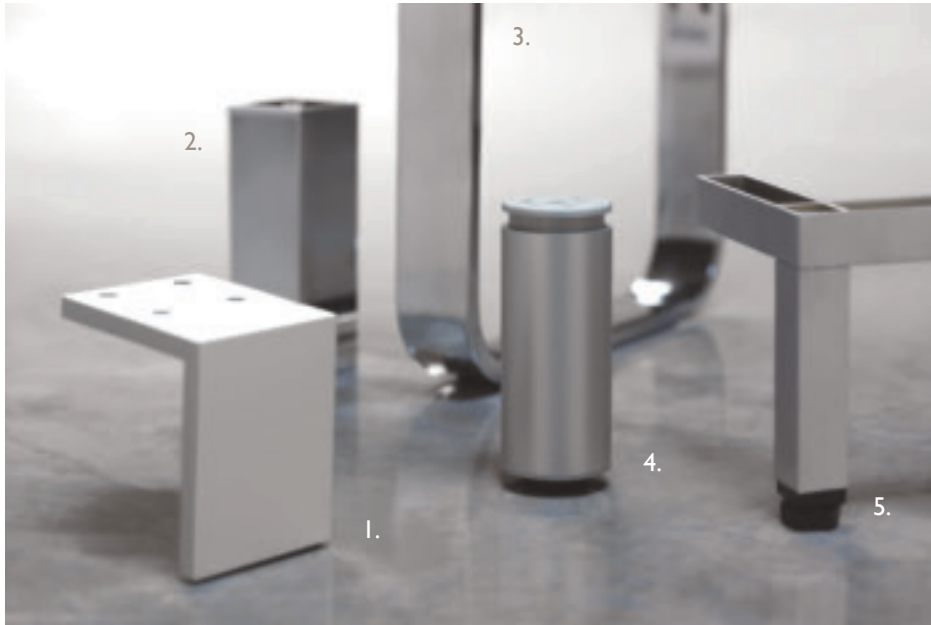


METAL DRAWER

- QuietClose™ Full Extension Undermount Guides
- Double Walled Metal Sides
- Melamine Back and Bottom

EMBELLISHMENT COLLECTION

DECORATIVE LEGS



- 1. Aluminum L Shape Leg
- 2. Chrome Plastic Square Leg
- 3. Metal U-Shape Pedestal Leg
- 4. Aluminum Finish Round Plastic Leg
- 5. Steel Y-Shape Leg

DECORATIVE HARDWARE



Convex Pull
Black Leather



Convex Knob
Black Leather



Pioneer Pull
Antique Copper



Contemporary Edge Pull
Stainless Steel



Contemporary
Edge Pull
Stainless Steel



Classic Knob
Brushed Nickel



Contemporary Pull Large
Brushed Nickel



Oriental Pull
Brushed Nickel



Cup Pull
Burnished Oil Rubbed Bronze



Crescent Pull
Brushed Nickel



Crescent Pull Large
Brushed Nickel



Cup Pull
Brushed Nickel



Bar Pull
Brushed Nickel



Bar Pull Large
Brushed Nickel



Pyramid Pull
Hammered Matte Black



Curved Pull
Nickel



Modern Metal Pull
Oil Rubbed Bronze



Step Pull
Brushed Nickel

ALUMINUM OPTIONS



OPPORTUNITY KNOCKS

Trending design themes demand a contemporary vibe. Aluminum Frame Doors offer sleek profiles and finishes, with a variety of glass options and metallic-like inserts that reflect what homeowners are requesting today.

PROFILE OPTIONS



profile 2

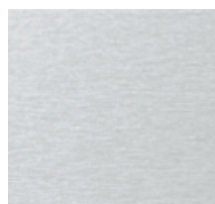


profile 3

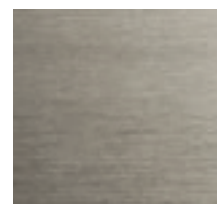


profile 7

PROFILE FINISHES



natural aluminum



brushed stainless

STANDARD INSERT OPTIONS



clear



listral



master carre



reeded

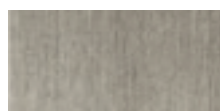


satın

METALLIC INSERT OPTIONS



aluminum

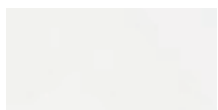


brushed stainless



platinum ice

BACK PAINTED GLASS INSERT OPTIONS



white gloss



sand gloss



charcoal gloss



black gloss



white matte



sand matte



charcoal matte

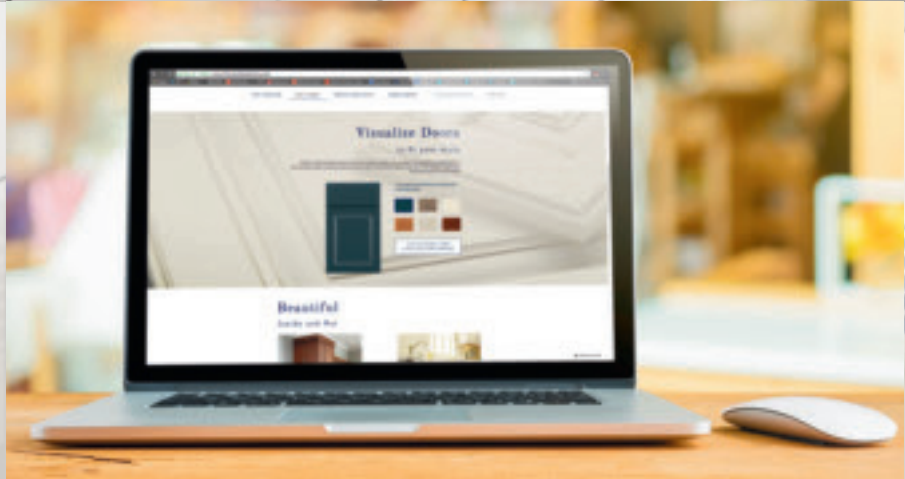


black matte



THOMASVILLECABINETRY.COM

Tools, resources and inspiring image galleries,
all designed to make your vision a reality!



Kitchen Cabinet Manufacturers Association
Environmental Stewardship Program
All Products Impact the Environment
For ESP Program Criteria, Visit kcmha.org

Thomasville
C A B I N E T R Y

NOUVEAU™



The Thomasville Cabinetry® logo is your assurance that products you buy from us meet our strict global standards for quality in materials and craftsmanship. Thomasville Cabinetry® is a registered trademark of Heritage Home Group LLC. All rights reserved © 2018. The Home Depot® is a registered trademark of Home Depot, Inc. All rights reserved.

Every effort has been made to ensure accuracy of product information current as of the publication date. Thomasville Cabinetry® is not liable for typographical errors. Final product selections may vary in color, finish and other features. Product photography and illustrations have been reproduced as accurately as printing technologies permit. To ensure highest satisfaction, we strongly recommend you view an actual sample for best color, wood grain and finish representation. Styles, product availability and construction may vary slightly from those shown in this catalog due to material availability and/ or design evolution. Specifications are subject to change without notice. For more details see www.thomasvillecabinetry.com or check with your designer.

WARRANTY INFORMATION Thomasville Cabinetry® is warranted by the manufacturer to the original consumer purchaser to be free from defects in material and workmanship under normal use for as long as they own their home. This warranty is only applicable to products used in residential applications within North America and is not transferable to subsequent owners. For complete details, please ask your Home Depot kitchen designer for the Thomasville Cabinetry® Warranty Document or visit www.thomasvillecabinetry.com.